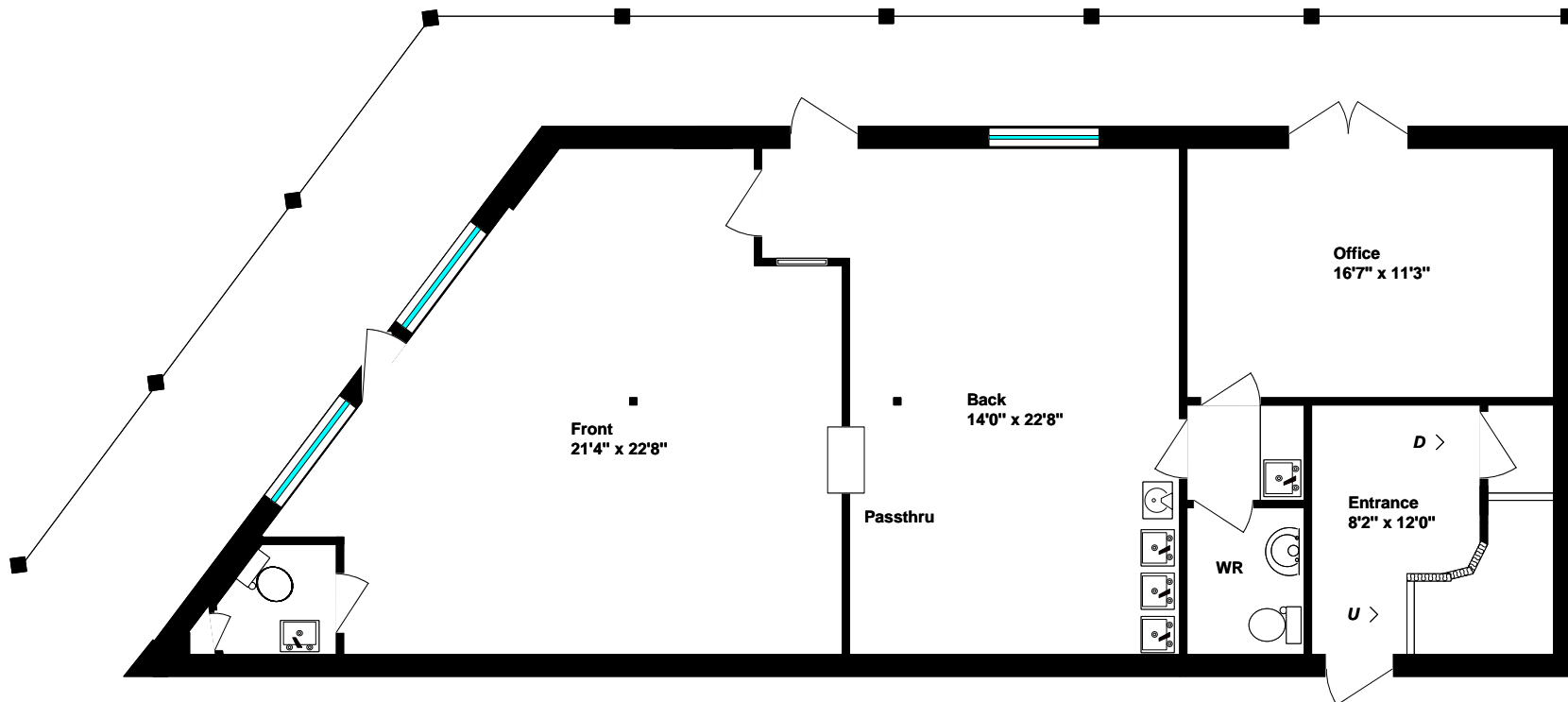


10831 County Road 2

Page 1 of 2
November 9, 2016

RE/MAX 905.373.1980

RE/MAX Lakeshore Realty Inc. Brokerage
Each Office Independently Owned & Operated



MAIN LEVEL
Approx 1400 sq ft

© All rights reserved.

www.pulla.ca

www.realtyservices.ca
905 396 8631



No part of this brochure may be reproduced in any form or by any means without the prior written permission of Tony Pulla and Steve Leach.

NOTICE: Floor plans have been drawn by Steve Leach of Realty Services. All square footage and room sizes are approximate dimensions only. No warranty or representation is made as to its accuracy. The Buyer to complete the appropriate "due diligence" and verify all data. - Steve Leach (www.realtyservices.ca) and Tony Pulla, Broker, RE/MAX Lakeshore Realty Inc., 2016.

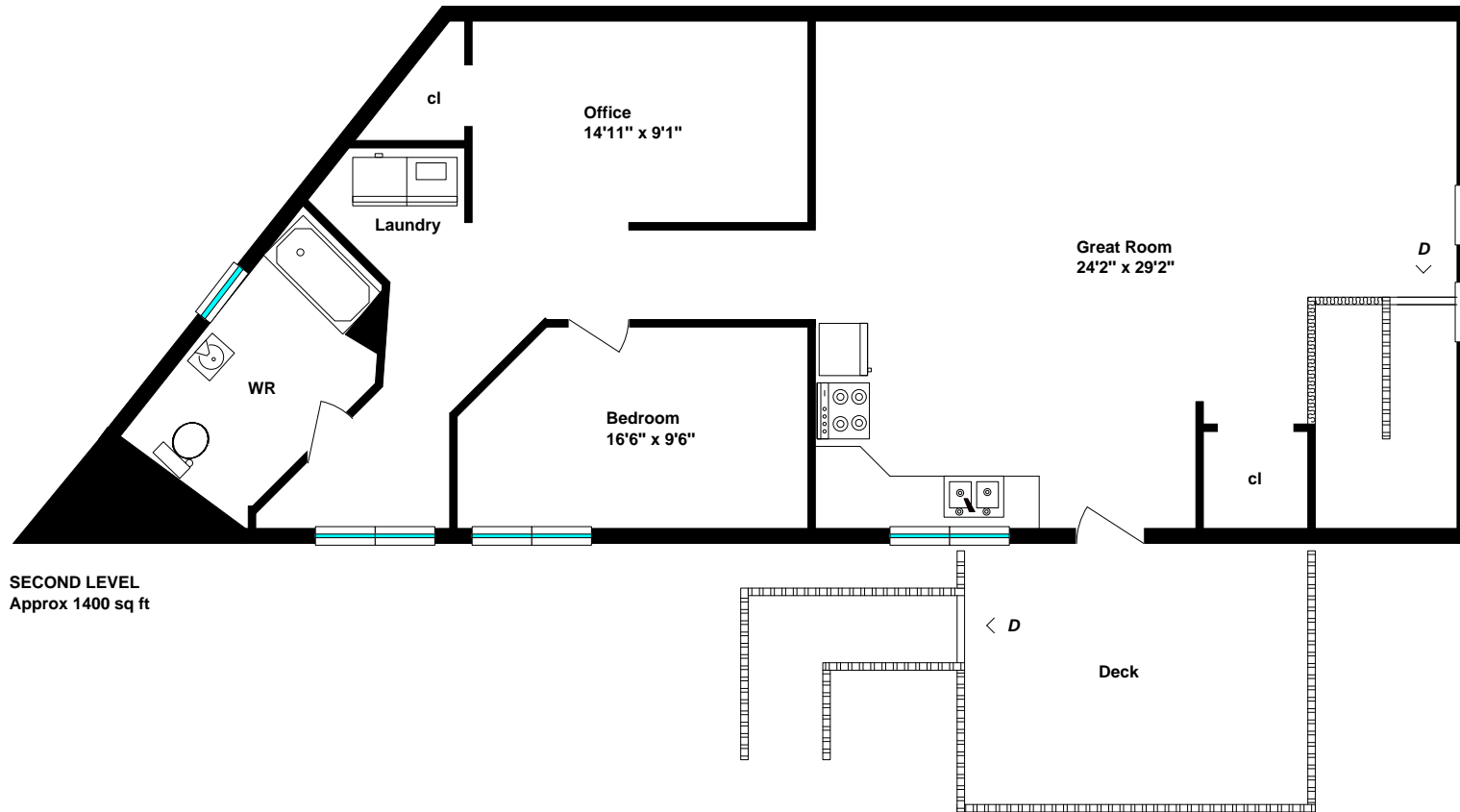
Tony Pulla
SINCE 1970
BROKER

10831 County Road 2

Page 2 of 2
November 9, 2016

RE/MAX 905.373.1980

RE/MAX Lakeshore Realty Inc. Brokerage
Each Office Independently Owned & Operated



SECOND LEVEL
Approx 1400 sq ft

© All rights reserved.

www.pulla.ca

www.realtyservices.ca
905 396 8631



No part of this brochure may be reproduced in any form or by any means without the prior written permission of Tony Pulla and Steve Leach.

NOTICE: Floor plans have been drawn by Steve Leach of Realty Services. All square footage and room sizes are approximate dimensions only. No warranty or representation is made as to its accuracy. The Buyer to complete the appropriate "due diligence" and verify all data. - Steve Leach (www.realtyservices.ca) and Tony Pulla, Broker, RE/MAX Lakeshore Realty Inc., 2016.

Tony Pulla
SINCE 1970
BROKER